

A/38 Micro-miniature Piezoelectric Triaxial Accelerometer

0.4pC/g nom. 0.9gm 200°C Max temp



Micro-miniature triaxial vibration transducers comprising three shear plate sensing elements. A/28/E inserts are bonded orthogonally into hard anodised aluminium housing.

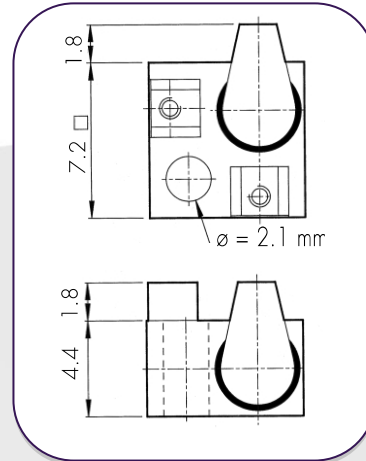
The inserts are electrically insulated, individually and from the housing, thus eliminating ground loop interference.

The additional mechanical isolation implicit in the construction provides near elimination of strain induced error.

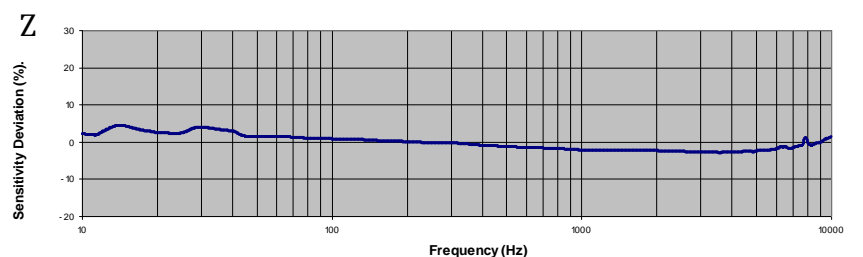
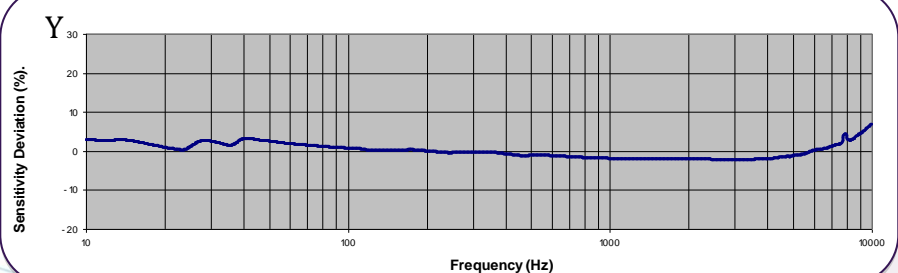
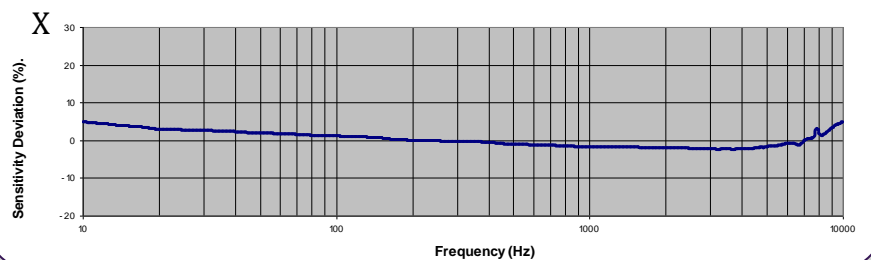
The spatial response of a structure to dynamic forcing may lead to erroneous single axis vibration or shock measurement, due to the inherent directional property of the transducer. In cases where this is deemed to be a problem, an orthogonal three axis measurement, allowing computation of absolute value and direction offers a solution.

The 3 output connectors of the A/38-1 are in the same horizontal plane.

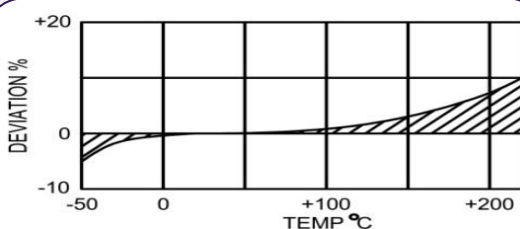
A/38



Typical Frequency Response



Temperature Response



Please note: For information and reference only. Data should not be used as pass / fail criteria for calibration purposes

DJB Instruments (UK) Ltd

Finchley Avenue,
Mildenhall, Suffolk IP28 7BG

A UK company with UK-based manufacturing, assembly and calibration in-house.

Tel

+44 (0)1638 712 288

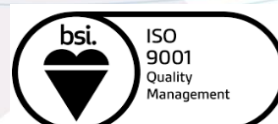
Email

sales@djbinstruments.com

Web

www.djbinstruments.com

DJB Iss.2 2018



FM11310

A/38 Micro-miniature Piezoelectric Triaxial Accelerometer

0.4pC/g nom. 0.9gm 200°C Max temp



Options

- Wideband temperature calibration

A/38, A/38-1

	Metric	Imperial
Charge Sensitivity nom.	0.04pC/(m/s ²)	0.4pC/g
Resonant Frequency	X/Y Axis 32kHz	Z Axis 36kHz
Typical Frequency Response	±5% 1Hz – 10kHz ±10% 0.7Hz – 11kHz	
Pyro-electric output	0.2°C	
Pyro-electric corner frequency	0.001Hz	
Cross Axis error	≤5% max	
Capacitance	280pF	
Temperature Range	-50/+200°C	-58/+ 392°F
Charge sensitivity deviation (20°C/68°F)	-5% @ -50°C +10% @ +200°C	-5% @ -58°F +10% @ +392°F
Base Strain Sensitivity	≤ 5%	
Maximum Continuous accn.g sine	19613m/s ²	2000g
Max Shock g level, rise time μs	98100m/s ² , 20	10000g, 20
Case Material	Inserts s/steel 303 S31 Hard anodized aluminium block	
Mounting	x1 Ø 2.1mm through hole, Adhesive	x1 Ø 1.08in through hole, Adhesive
Weight	0.9g	0.032oz
Case Seal	Welded	
Size	7.3 x 7.3 x 4.4mm	0.29 x 0.29 x 0.17in
Connector	3 x L8	

Please note: For information and reference only. Data should not be used as pass / fail criteria for calibration purposes

DJB Instruments (UK) Ltd

Finchley Avenue,
Mildenhall, Suffolk IP28 7BG

Tel +44 (0)1638 712 288
Email sales@djbinstruments.com
Web www.djbinstruments.com

A UK company with UK-based manufacturing, assembly and calibration in-house.

DJB Iss.2 2018



FM11310