



## A/1107/V Industrial IEPE Piezo Tronic Accelerometer

100mV/g +/- 10%

85gm

185°C Max

Industrial grade IEPE accelerometer with integral two wire charge/voltage converter (QVC), providing a standardized 100mV/g output. Signal output is floating, via 2 pole hermetic connector, thus minimizing common mode interference. Transducers and cables can be supplied proof pressure tested to 80bar, individually and as assemblies. They are also for use in hostile environments including fluid immersion.

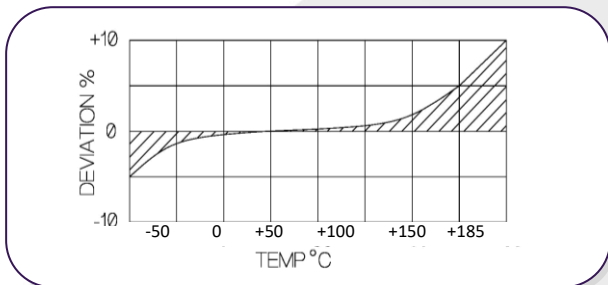
Pressure tested assemblies may be disconnected for ease of installation, subsequently replacing the sealing ring between the connector shells.

Internal electrical connections are welded. Pressure and thermal cycle tests are recommended for hostile environment applications.

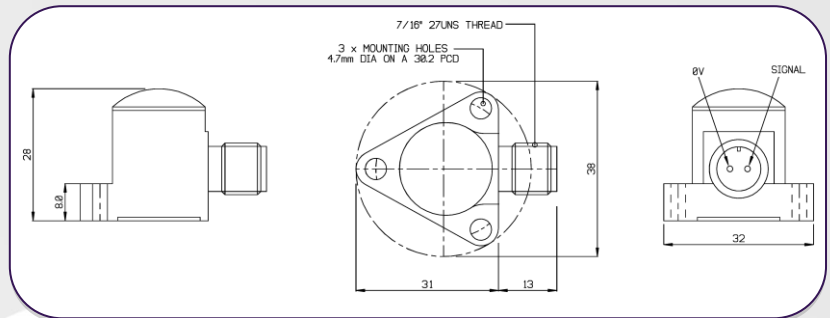
### Construction

Konic Shear® sensor/hybrid thick film QVC electrically isolated with output via two pole hermetic connector. All welded case, suitable for immiscible applications.

### Temperature Response



### A/1107/V



	Metric	Imperial
Voltage Sensitivity ±10%	10.2mV/(m/s <sup>2</sup> )	100mV/g
Resonant Frequency kHz	18	
Cross Axis Error % max	≤ 5	
Temp, range	-50/ +185°C	-58/ +365°F
Output, Sensitivity Deviation re 20°C/68°F	-5% @ -50°C +5% @ +185°C	-5% @ -58°F +5% @ +365°F
Max Continuous accn, g sine pk	9,807m/s <sup>2</sup>	1000g
Supply Voltage V DC	15 / 35	
Supply Current mA	2/15	
Bias Voltage V DC@ 20°C	9 /10	
Settling Time, sec to 90% final val.	<1	
Noise Level Equiv mg	0.7	
Typical Frequency Response	1Hz – 3kHz ±5% 0.7Hz – 4kHz +10%	
Base Strain Sensitivity	≤ 5%	
Saturation Limit equiv, pk,g	490.3m/s <sup>2</sup>	50g
Case Material	s/steel 303 S31	
Mounting	3 x 3.2mm holes on 25.4mm PCD	3 x 0.13in holes on 1inch PCD
Weight	130gm	4.59oz
Connector	7/16" UNS 2 pole connector	
Case Seal	Welded	
Size	29.2 x 29.1 x 24.5mm	1.15 x 1.15 x 0.96in

### Options

- Temperature calibration to 185°C.
- Proof pressure testing to 80 bar

### Typical Spectral Noise (100mV/g)

1Hz	732 µg/√Hz
10Hz	82.1 µg/√Hz
100Hz	16.2 µg/√Hz
1kHz	4.2 µg/√Hz
10kHz	3.1 µg/√Hz

**Please note: For information and reference only. Data should not be used as pass / fail criteria for calibration purposes.**

### DJB Instruments (UK) Ltd

Finchley Avenue,  
Mildenhall, Suffolk IP28 7BG

Tel +44 (0)1638 712 288  
Email sales@djbstruments.com  
Web www.djbstruments.com

DJB Iss.3.2019



FM11310